

Shooting Stars Nurseries - Barbara Hart House Refurbishment and Extension



Before



After

Project name:

Shooting Stars Nurseries
- Barbara Hart House

Location:

Kings Norton, Birmingham

Value:

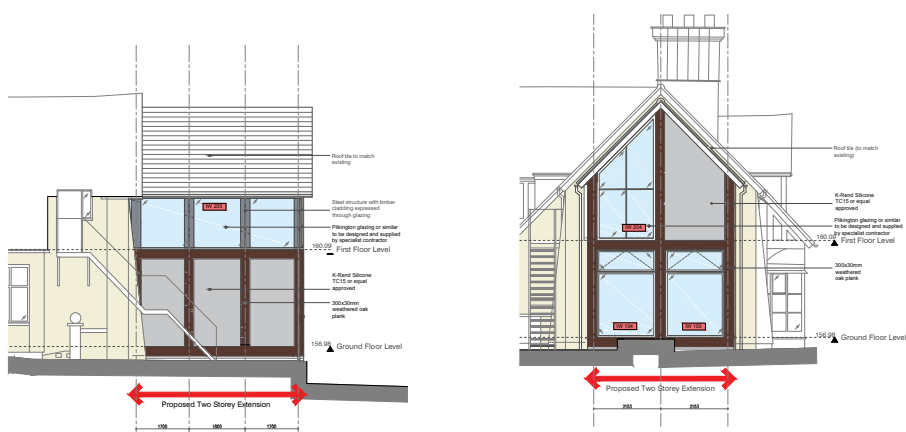
£700K

Services:

Architecture
Landscape Architecture
Civil & Structural Engineering
Building Services (M&E)
Principal Designer

The Brief

Shooting Stars Nursery had purchased new premises which required planning consent for change of use so that it could be used as an early years setting. The site also required full refurbishment and extension to maximise the available space and to meet the relevant regulations for childcare settings for indoor space ratios.



Project Overview

Having previously worked with One Creative Environments Ltd. (One), who successfully designed the extension of their Worcester facility and gained planning consent, Shooting Stars Nursery commissioned One's team to obtain the relevant planning consent and design the refurbishment and extension of their newly acquired facility in Kings Norton, Birmingham.

Previously a commercial space for NHS offices, the planning application required a change of use to education and an extension to maximise the available space and to meet the necessary regulations for ratios for available space per child in childcare settings.

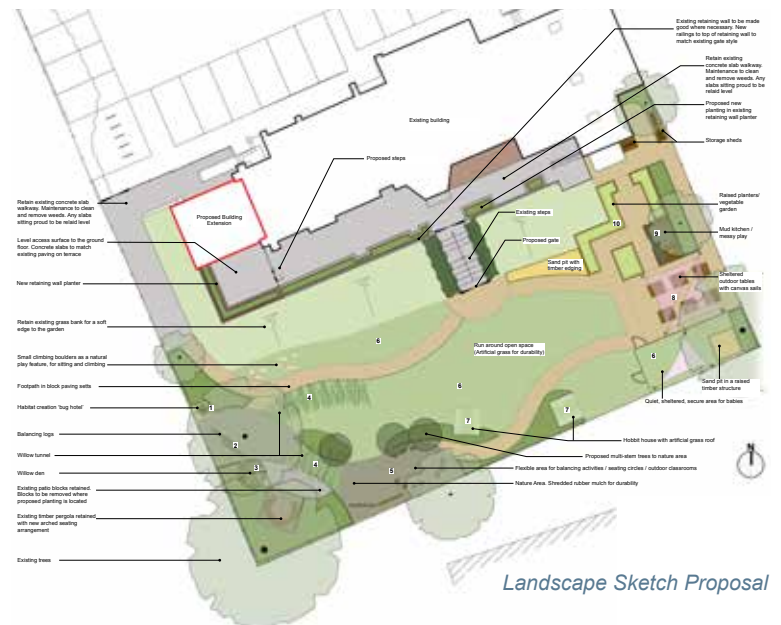
The building is not listed, however, is of local architectural interest and so sensitivity in the design was required for the extension to be in keeping with the original building and the whole space reconfigured to meet the needs of the nursery.

One provided a tender pack, fully specified the extension work from a construction perspective and is providing ongoing site support, as required, to ensure continuity from design through to completion.

“

One really understands what is required for a nursery setting. We are pleased to once again be working with the team to reconfigure and extend our new premises. ”

Jon Higgins, Director of Shooting Stars Nurseries



The Benefits

- **Making the best use of space** – One understood the requirements of the nursery and reconfigured the available space appropriately so that the nursery could maximise their intake and meet the regulations for indoor space ratios for childcare settings.
- **Support throughout the construction phase** – to ensure continuity for the client and manage the process from design through to completion.
- **Sensitive design leading to planning consent** – One's team are experienced in sensitively designing for bespoke buildings, including those of historical importance, and obtaining the relevant planning consent.

For further information please contact:
One Creative Environments Ltd
T: 01905 362300 www.oneltd.com